



Specifications: Solid, Douglas-fir Flooring

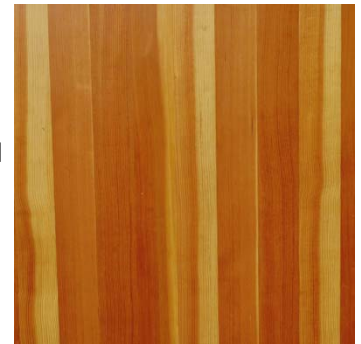
Product	Classic Douglas-fir	
Species	<i>Pseudotsuga menziesii</i>	
Grain Pattern	Tight, Vertical Grain	
Color Tones	Initially a light brown this floor develops a consistent, golden cognac color that's unique only to Douglas fir.	
Product Description	<p>Classic Douglas-fir is made without compromise, for the fir aficionado. This exquisite material is selectively harvested from the coast of British Columbia. The lumber is then graded to minimize the appearance of sapwood. Sapwood is the lighter yellow colored streaking common to fir. The combination of a wider plank, long lengths and tight consistent grain create a fir floor like no other.</p>	
Finish	Unfinished	
Millwork	Square edge, unmatched	
Dimensions	Standard dimensions 3/4" thick X 4½" face X random length 4' to 10' Non standard dimensions available upon request	
Density/Hardness	Hardness rating of 710 Janka.	
Packaging	Bulk lift	
Lead Time	2 to 3 weeks	
Recommendations	Nail down into subfloor or on stringers. Not recommended for installation on concrete or above radiant floors, use our engineered flooring instead. Install per NWFA guidelines.	
Other	Custom sizes available ½" to 2" thick, 2" to 7¼" wide	
About these specs	This specification sheet is designed to give general information about our products. The specifications are subject to change and products are limited to material availability. Please contact us directly for the availability of this product and the particular specifications needed for your project. Detailed specifications will be confirmed in writing.	
Contact Info	<p>Mailing Address 10189 McDonald Pk. Rd. Sidney, BC, V8L 3S8 Canada</p>	<p>Phone: 1-800-667-2275 , Fax: (250) 656-9663 Email: flooring@westwindhardwood.com Web: http://www.flooringbywestwindhardwood.com</p>
<p>Member  National Wood Flooring Association</p>		






Specifications: Solid, Douglas-fir Flooring

Product	New Fir	
Species	<i>Pseudotsuga menziesii</i>	
Grain Pattern	Course, Vertical Grain with the odd knot	
Color Tones	Amber heartwood contrasted with yellow/tan sapwood	
Product Description	<p>New Fir - Second Growth flooring is a fresh new option, produced from second growth lumber; harvested from younger forests. It offers a distinctive look with a lively wider grain pattern, accented by lighter toned sapwood. New Fir will add warmth, charm and interest to any décor.</p>	
Finish	Unfinished	
Millwork	Square edge, unmatched	
Dimensions	Standard dimensions 3/4" thick X 4½" face X random length 4' to 10' Non standard dimensions available upon request	
Density/Hardness	Hardness rating of 710 Janka.	
Packaging	Bulk lift	
Lead Time	2 to 4 weeks	
Recommendations	Nail down into subfloor or on stringers. Not recommended for installation on concrete or above radiant floors. Use our engineered flooring. Install per NWFA guidelines.	
Other	Custom sizes available ½" to 2" thick, 2" to 7¼" wide	
About these specs	This specification sheet is designed to give general information about our products. The specifications are subject to change and products are limited to material availability. Please contact us directly for the availability of this product and the particular specifications needed for your project. Detailed specifications will be confirmed in writing.	
Contact Info	<p>Mailing Address 10189 McDonald Pk. Rd. Sidney, BC, V8L 3S8 Canada</p>	<p>Phone: 1-800-667-2275 , Fax: (250) 656-9663 Email: flooring@westwindhardwood.com Web: http://www.flooringbywestwindhardwood.com</p>
<p>Member  National Wood Flooring Association</p>		




Specifications: Solid, Douglas-fir Flooring



Product	Recycled Fir, FSC-Recycled	
Species	<i>Pseudotsuga menziesii</i>	
Grain Pattern	Flat & vertical, knots and visible signs of distress	
Color Tones	Mainly amber with occasional tan/yellow sap streaking	
Product Description	<p>Our commitment to the environment shines with our FSC Recycled Douglas fir flooring. Using beams from dismantled buildings and old structures, a mix of grain patterns is achieved, each telling its own story. Whether working on a LEED project, or simply reducing your environmental footprint, recycled fir is a feel good choice.</p> <p>*Current recycled stock is from laminated industrial beams, perpendicular glue lines are visible (can be cut out if desired) occasional aluminum nails may be found and</p>	
Finish	Unfinished	
Millwork	Square edge, unmatched	
Dimensions	Standard dimensions 3/4" thick X 4½" face X random length 4' to 10' Non standard dimensions available upon request	
Density/Hardness	Hardness rating of 710 Janka.	
Packaging	Bulk lift	
Lead Time	2 to 4 weeks	
Recommendations	Nail down into subfloor or on stringers. Not recommended for installation on concrete or above radiant floors. Use our engineered flooring. Install per NWFA guidelines.	
Other	Custom sizes available ½" to 2" thick, 2" to 7¼" wide	
About these specs	This specification sheet is designed to give general information about our products. The specifications are subject to change and products are limited to material availability. Please contact us directly for the availability of this product and the particular specifications needed for your project. Detailed specifications will be confirmed in writing.	
Contact Info	<p>Mailing Address 10189 McDonald Pk. Rd. Sidney, BC, V8L 3S8 Canada</p>	<p>Phone: 1-800-667-2275 , Fax: (250) 656-9663 Email: flooring@westwindhardwood.com Web: http://www.flooringbywestwindhardwood.com</p>
<p>Member  National Wood Flooring Association</p>		



Specifications: Solid, Douglas-fir Flooring

Product	Appearance fir –Solid Plank, FSC Pure	
Species	<i>Pseudotsuga menziesii</i>	
Grain Pattern	Vertical, fine to medium grain, with tight knots	
Color Tones	Amber tone with occasional sap streaking	
Product Description	<p>A uniquely warm look with a touch of rustic charm. This Douglas-fir floor is harvested according to FSC guidelines in the mountains of North-Eastern BC. The high altitude growing conditions contribute to finer than normal grain which is contrasted nicely by tight knots. A unique and sustainably harvested floor.</p>	
Finish	Unfinished	
Millwork	Square edge, unmatched	
Dimensions	Standard dimensions 3/4" thick X 4½" face X random length 4' to 10' Non standard dimensions available upon request	
Density/Hardness	Hardness rating of 660 Janka.	
Packaging	Bulk lift	
Lead Time	8- 10 weeks, possibly longer depending on material availability	
Recommendations	Nail down into subfloor or on stringers. Not recommended for installation on concrete or above radiant floors. Use our engineered flooring. Install per NWFA guidelines.	
Other	Custom sizes available ½" to 2" thick, 2" to 7¼" wide	
About these specs	This specification sheet is designed to give general information about our products. The specifications are subject to change and products are limited to material availability. Please contact us directly for the availability of this product and the particular specifications needed for your project. Detailed specifications will be confirmed in writing.	
Contact Info	<p>Mailing Address 10189 McDonald Pk. Rd. Sidney, BC, V8L 3S8 Canada</p>	<p>Phone: 1-800-667-2275 , Fax: (250) 656-9663 Email: flooring@westwindhardwood.com Web: http://www.flooringbywestwindhardwood.com</p>
<p>Member  National Wood Flooring Association</p>		

